

FLEXBAND[®]

is a Dynamic Matrix™ for the restoration of tendons and ligaments. Designed to provide strength and elasticity¹ to a repair, these novel materials work with biology to pursue optimal outcomes by **restoring** natural motion, **resisting** failure due to necrosis, and **regenerating** native connective tissue^{2,3,4}.

A 55 yr old female presented with pain at the Achilles tendon insertion site. X-rays revealed prominent Haglunds with exostosis at the insertion (Figure 1). A midline approach over the insertion was utilized, and the Achilles was split at its midline allowing each limb to be reflected medially and laterally respectively (Figure 2). This resection revealed the prominent calcaneal exostosis (Figure 2 circle).

The calcaneal exostosis and Haglunds were resected, and the edges smoothed to ensure no bony prominence remains (Figure 3).

Mucoid degenerative changes of the distal stump were noted, with degenerated tissue being sharply excised (Figure 4).



Figure 1

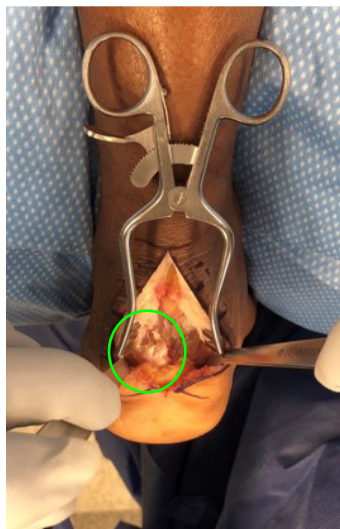


Figure 2



Figure 3



Figure 4

References

1. Gisselbalt et al., *Biomacromolecules* 2002, 3, 951-958.
2. Lijjsten et al., *J. Biomater. Sci: Materials in Medicine* 13 (2002) 351-359.
3. Peterson et al., *Knee Surg Sports Traumatol Arthrosc* (2014) 22:2109-2120.
4. Peterson et al., *The Anterior Cruciate Ligament: Reconstruction and Basic Science*. 2nd ed., Elsevier 2018.



AS DESCRIBED BY DANIEL CUTTICA, DO (FALLS CHURCH, VA)

Following debridement to healthy tissue, the tendon was much thinner than native tendon and augmentation was deemed necessary (Figure 5).

A 0.5x8cm FLEXBAND was chosen to augment the midline repair to enhance the strength of the distal stump (Figures 6 & 7). Slight tension is added to the FLEXBAND while suturing into place. In my experience, utilizing this augmentation can often prevent the need for a FHL transfer in these procedures, while allowing for earlier weightbearing.

Following the midline repair, the Achilles is brought down to its insertion with the suture anchor construct of choice.



Figure 5



Figure 6



Figure 7



Figure 8

WHAT TO ORDER?

P/N 31053 FLEXBAND 0.5 x 8cm

*Suture of choice for tendon repair

*Suture anchor construct of choice for calcaneal reattachment

For more information regarding Artelon's products and their use in other indications, please visit:

WWW.ARTELON.COM

International Life Sciences, dba Artelon®
2150 Northwest Parkway SE, Suite G
Marietta, GA 30067
Ph. 800.610.3446

Email: customerservice@artelon.com

© 2021 Artelon. All rights reserved. Protected under US and foreign patents

4000147 Rev. A

